

TECHNO HOMES CO.

# Jericho Hills Project

## VILLA TYPE A

DEVELOPER  
TECHNO HOMES CORP.

ARCHITECT  
KHALED AQQAD

INTERIOR ARCHITECT  
MIRAL RIZEK

MECHANICAL ENGINEER  
MITRI RIZEK



TECHNO HOMES CO. INDUSTRIAL ZONE, RAMALLAH, BETUNIA POBOX 19015,  
TEL: 02-295 9040, FAX: 02-295 9044

VILLA A

JERICO HILLS PROJECT  
TECHNO HOMES CO.

# JERICO HILLS PROJECT MASTER PLAN





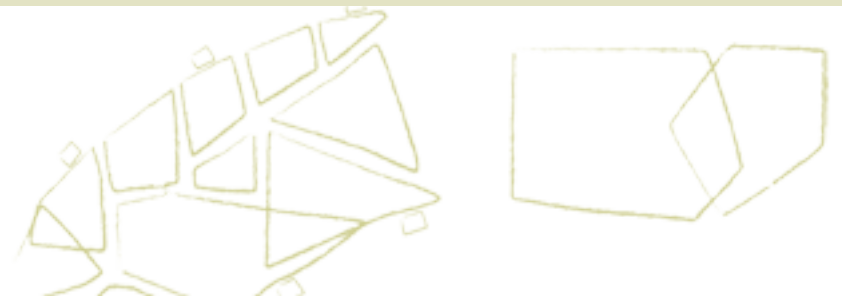
## TECHNO HOMES CO. Jericho Hills Project



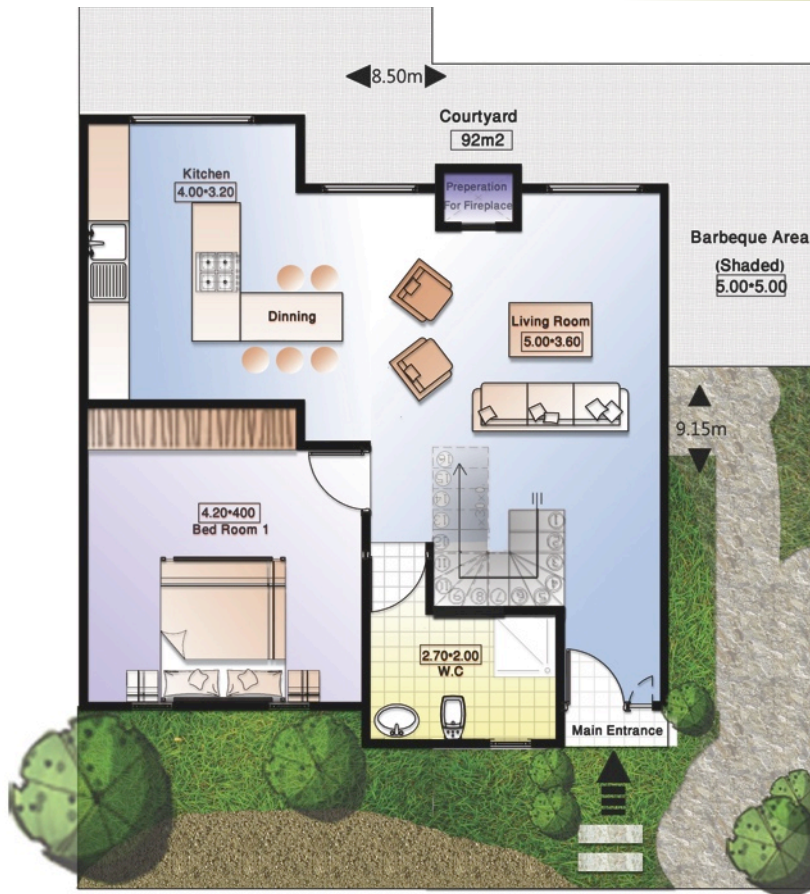
FRONT VIEW (POOL SIDE) 3D SHOT



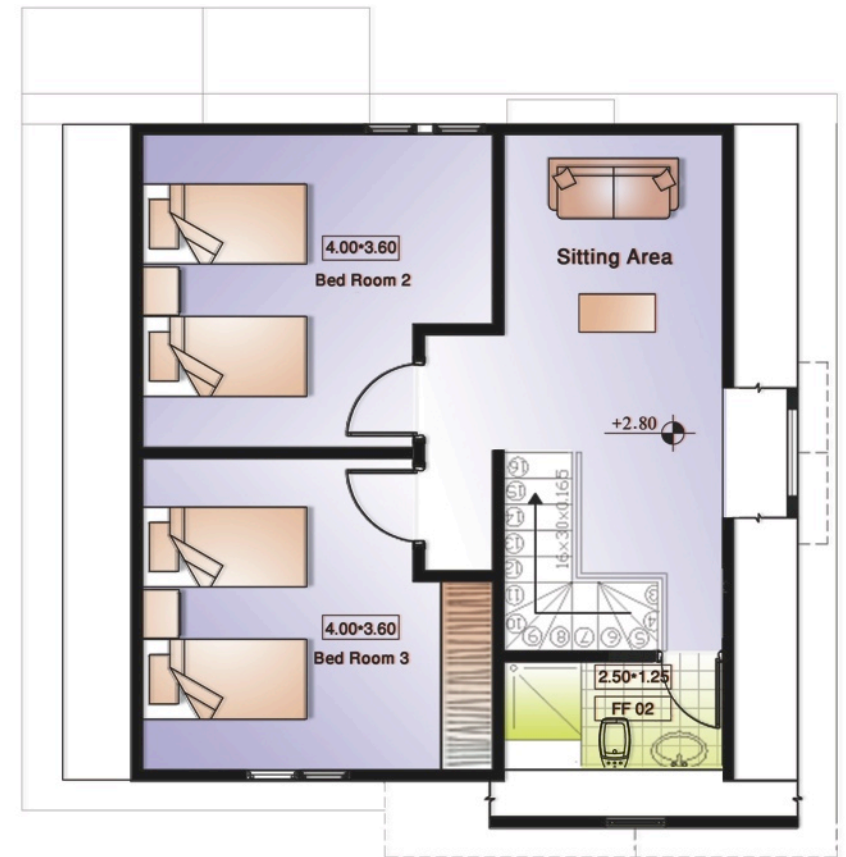
REAR VIEW 3D SHOT



## TECHNO HOMES CO. Jericho Hills Project



GROUND FLOOR PLAN



FIRST FLOOR PLAN



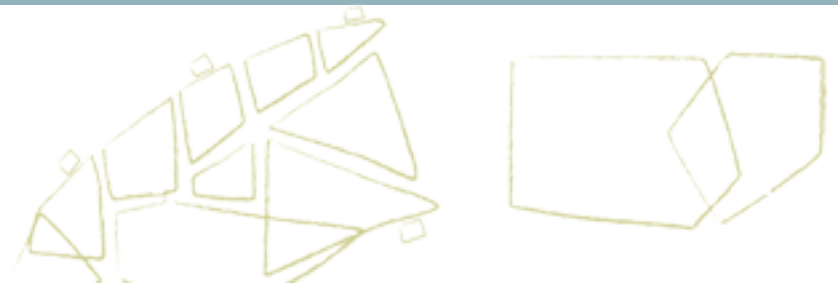
## TECHNO HOMES CO. Jericho Hills Project




FRONT VIEW (POOL SIDE) ELEVATION



REAR VIEW ELEVATION





Technical Information Sheet Villa A	
<b>Total Built-up Area</b>	144.64- 152.35 m <sup>2</sup>
<b>Total Building Area</b>	126 m <sup>2</sup>
<b>Total Living Area- Ground Floor</b>	70 m <sup>2</sup>
<b>Total Living Area- First Floor</b>	56 m <sup>2</sup>
<b>Total Covered Patio Area</b>	18.46- 26.35 m <sup>2</sup>
<b>Building Width</b>	8.5 m
<b>Building Depth</b>	9.15 m
<b>Bedrooms</b>	3
<b>Master Bedroom (Ground Floor)</b>	4.20 X 4.00 m
<b>Bedroom 1 (First Floor)</b>	4.00 X 3.60 m
<b>Bedroom 2 (First Floor)</b>	4.00 X 3.60 m
<b>Bathrooms</b>	2
<b>Total Private Landscape Area</b>	91.25-101.75 m <sup>2</sup>
<b>Total Pool Area</b>	126 m <sup>2</sup>
<b>Foundation Type</b>	Floating Slab Foundation
<b>Type of Walls (Exterior and Interior)</b>	Fiber Cement Magic Board Sheathing with Foam insulation core
<b>Roof Structure</b>	SIP Magic Board covered with Shingles
<b>Exterior Wall covering</b>	Culture Stone & Exterior Paint
<b>Windows</b>	Double Glazed Argon Filled Windows
<b>Doors</b>	Interior Wood Doors and Exterior Aluminum Doors.
<b>Ground floor description:</b> Entrance, bathroom, master bedroom, kitchen, living room and terrace.	
<b>First Floor description:</b> Two bedrooms, sitting area and bathroom	
<b>Distinctive Features:</b> Central heating and air-conditioning, ready to install fireplace pit, built in wardrobes in bedrooms, semi-finished kitchen and two 3 piece bathrooms with stand up showers.	

